



**Belgian SportsCasting Federation vzw  
and  
Belgian Confederation of Sea Anglers**  
In conjunction with :  
**Belgian Surfcasting Club vzw and Surfcast Flanders vzw**



Met steun van de  
Vlaamse overheid



Present

Met steun van de  
Vlaamse overheid



**16th**

# **World Championships**

# **Long Casting**

*16th  
World Championships  
Long Casting*

**13 - 19 august 2013**



**Belgian Confederation of Sea Anglers**  
**and**  
**Belgian SportsCasting Federation vzw**

Website : [www.bscf.be](http://www.bscf.be)



Uitnodiging voor  
CIPS/FIPS-M Wereldkampioenschappen “Long Casting” 2013

Invitation to  
CIPS/FIPS-M World Championships “Long Casting” 2013

Invitation aux  
CIPS/FIPS-M Championnat du Monde “Lancer des Poids de Mer” 2013



Met steun van de  
Vlaamse overheid





**Belgian SportsCasting Federation vzw  
and  
Belgian Confederation of Sea Anglers**

**In conjunction with :  
Belgian Surfcasting Club vzw and Surfcast Flanders vzw**



January 2013

Fellow casters,

The Belgian SportsCasting Federation - BSCF and the BCSA (Belgian Confederation of Sea Anglers) have the honour of inviting your Federation to participate at the 16<sup>th</sup> FIPS-M World Long Casting Championships, scheduled to take place at Zwijndrecht/Antwerp during the period of 13 to 19 August 2013. Included in this event will be the 1<sup>st</sup> FIPS-M Open Championship Long Casting for Ladies.

The hotel "Holiday Inn Express Antwerp" has been designated to be the official H.Q. where the athletes, their officials and companions will be accommodated. This hotel is already well known with many of your athletes because it was also the official hotel for several international events organised in Belgium.

**Participation fee to competitors and companions will be 500 euros on a 2-person a room based formula.  
This costs includes:**

- opening banquet and reception (14/8)
  - full board for the period indicated in the official program
  - presentation of prizes with banquet (19/8)
- ⇒ In case a delegation has an odd amount of numbers, for the room that will be occupied by one person instead of two persons, a complementary fee of 200€ will be invoiced to the concerning nation.
- ⇒ Although we ask to avoid it : if there is a need or request for a participant or companion to stay in a single room, the participation fee will be 700€ instead of 500€.

For those participants or companions that wish to stay longer in the hotel before or after the championship there is a possibility at request to the organizer at : **Price for a 2-person hotel room + breakfast/day: 90 euros** a room a night including breakfast.

The championships will be spread over four days of competition (2 competition days for the ladies). For further details : see programs included. To enable us to make final arrangements, I would be grateful if you would, as soon as possible, indicate your attention to participate by completing the enclosed registration form. However, we are counting on receiving the form latest 1/5/2013. The participation fee needs to be send before 1/6/2013 along with the final participants and companions list.

Due to fully booked hotel accommodations in and around Antwerp during the World Championships there is strong chance we cannot supply any accommodation for those who confirm/pay their participation and fee later than 1/6/2013. We regret this but count on your co-operation and hope for your understanding.

Thank you for your co-operation and we look forward to meeting you all in August.

Enclosed, we send :

- the final program
- some information about the hotel
- a nation registration form (1/5/2013)
- a final registration form (1/6/2013)
- some general information

Opdebeeck Erik  
Chairman BSCF  
President Belgian Confederation of Sea Anglers

All correspondence to: Opdebeeck Erik  
Belgian SportsCasting Federation vzw  
Toekomstlaan 151  
B-2900 Schoten  
Belgium

All information: Opdebeeck Erik  
Tel nr. +32-497-434850  
E-mail: [chairman@surfcasting.be](mailto:chairman@surfcasting.be)

**Official Program**  
**16th FIPS-M World Long Casting Championships**  
**from 13 to 19 August 2013**

Location:		Zwijndrecht - Antwerp
Organizing Federation:	BSCF	Belgian SportsCasting Federation
	Member of BCSA	Belgian Confederation of Sea Anglers
	Member of FIPS-Mer	Fédération International de Pêche Sportive au Mer

The championship will be spread over 4 days of competition:

- Tuesday 13/8 : 19-22h arrival athletes / companions  
Diner is at charge and has to be taken outside of the hotel. Therefore ask the organizers to find you a solution.
- Wednesday 14/8 :
  - 9-15h official training
  - 11-14h captains meeting on the field at meeting area
  - 18h-21h opening ceremony + reception/diner on the field
- Thursday 15/8 :
  - 9h-18h competition : 175gr
  - 19h-21h diner on the field
- Friday 16/8 :
  - 9h-18h competition : 150gr
  - 19h-21h diner on the field
- Saturday 17/8 :
  - 9h-18h competition : 125gr
  - 19h-21h diner on the field
- Sunday 18/8 :
  - 9h-18h competition : 100gr
  - 19h-21h diner on the field
- Monday 19/8 :
  - 10h-12h pricing / closing ceremony
  - 12h-15h closing diner
  - 15h-17h departure athletes

**Official Program**  
**1<sup>st</sup> FIPS-M Open Championship Long Casting Ladies**  
**from 13 to 19 August 2013**

Location:		Zwijndrecht - Antwerp
Organizing Federation:	BSCF	Belgian SportsCasting Federation
	Member of BCSA	Belgian Confederation of Sea Anglers
	Member of FIPS-Mer	Fédération International de Pêche Sportive au Mer

The female championship will be spread over 2 days of competition :

- Tuesday 13/8 : 19-22h arrival athletes / companions  
Diner is at charge and has to be taken outside of the hotel. Therefore ask the organizers to find you a solution.
- Wednesday 14/8 :
  - 9-15h official training
  - 11-14h captains meeting on the field at meeting area
  - 18h-21h opening ceremony + reception/diner on the field
- Thursday 15/8 :
  - 9h-18h no competition : lunch included
  - 19h-21h diner on the field
- Friday 16/8 :
  - 9h-18h no competition : lunch included
  - 19h-21h diner on the field
- Saturday 17/8 :
  - 9h-18h competition : 125gr
  - 19h-21h diner on the field
- Sunday 18/8 :
  - 9h-18h competition : 100gr
  - 19h-21h diner on the field
- Monday 19/8 :
  - 10h-12h pricing / closing ceremony
  - 12h-15h closing diner
  - 15h-17h departure athletes



**Belgian SportsCasting Federation vzw  
and  
Belgian Confederation of Sea Anglers**  
In conjunction with :  
**Belgian Surfcasting Club vzw and Surfcast Flanders vzw**

---




To all delegations we are asking the following :

If you travel by airplane, please inform the organization.

We ask to bring the following items :

- Official medical attest for each participant proving the athlete is fit to participate. In case the athlete is taking any medicines, it has to be stated on the document. The athletes who do not provide this attest will be seen by a medical doctor before the event. The costs are 100% for the athlete.
- 2 national flags of your nation
- CD with national anthem
- We ask those that travel by car to bring their own shelter/tent (not umbrella's) with chairs and rod-rests.

Met steun van de  
Vlaamse overheid 



**Belgian SportsCasting Federation vzw  
and  
Belgian Confederation of Sea Anglers**

**In conjunction with :  
Belgian Surfcasting Club vzw and Surfcast Flanders vzw**



**registration form - bulletin d'inscription – inschrijvingsformulier**

latest 1/5/2013

16<sup>th</sup> FIPS-M World Long Casting Championships  
16<sup>ème</sup> FIPS-M Championnat du Monde Lancer des Poids de Mer

1st FIPS-M Open Championship Long Casting Ladies  
1er FIPS-M Championnat 'Open' Lancer des Poids de Mer pour dames

**Notice of participation ; Notice du participation  
Deelnemingsintentie**

Pays – País – Country – Land –Lande – Nation : .....  
Fédération – Federacão – Federation - Verband – Federatie : .....  
Participants – Deelnemers / nr of teams : ...../.....teams  
Female participants – participants female : .....  
Accompagnateurs - companions – begeleiders : .....pers.  
Jour d'arrivée/partir - arrival/leaving day–aankomst/vertrekdag : ...../.....

Date-Datum

Signature

...../...../.....

Adresse/Address/Adres

.....  
.....  
.....  
.....

e-mail : .....

**Met steun van de  
Vlaamse overheid**





**Belgian SportsCasting Federation vzw  
and  
Belgian Confederation of Sea Anglers**  
In conjunction with :  
**Belgian Surfcasting Club vzw and Surfcast Flanders vzw**



**registration form - bulletin d'inscription – inschrijvingsformulier**

16<sup>th</sup> FIPS-M World Long Casting Championships  
16<sup>ème</sup> FIPS-M Championnat du Monde Lancer des Poids de Mer

1st FIPS-M Open Championship Long Casting Ladies  
1er FIPS-M Championnat 'Open' Lancer des Poids de Mer pour dames

**TO BE SEND LATEST 1/6/2013 - A ENVOYER AVANT 1/6/2013**

Pays – País – Country – Land –Lande – Nation : .....

Fédération – Federacão – Federation - Verband – Federatie : .....

Jour d'arrivée/partir - arrival/leaving day–aankomst/vertrekdag : ...../.....

	team 1	team 2	female
name / nom 1			
name / nom 2			
name / nom 3			////////////////////
name / nom 4			////////////////////
name / nom 5			////////////////////
team captain			
companion - accompagnateur			
names / noms :			

Date-Datum

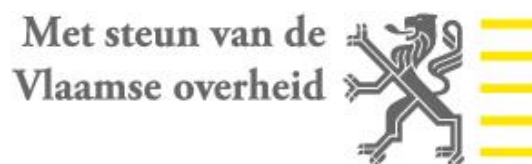
Signature

...../...../.....

Address/Adresse/Adres

.....  
.....  
.....  
.....

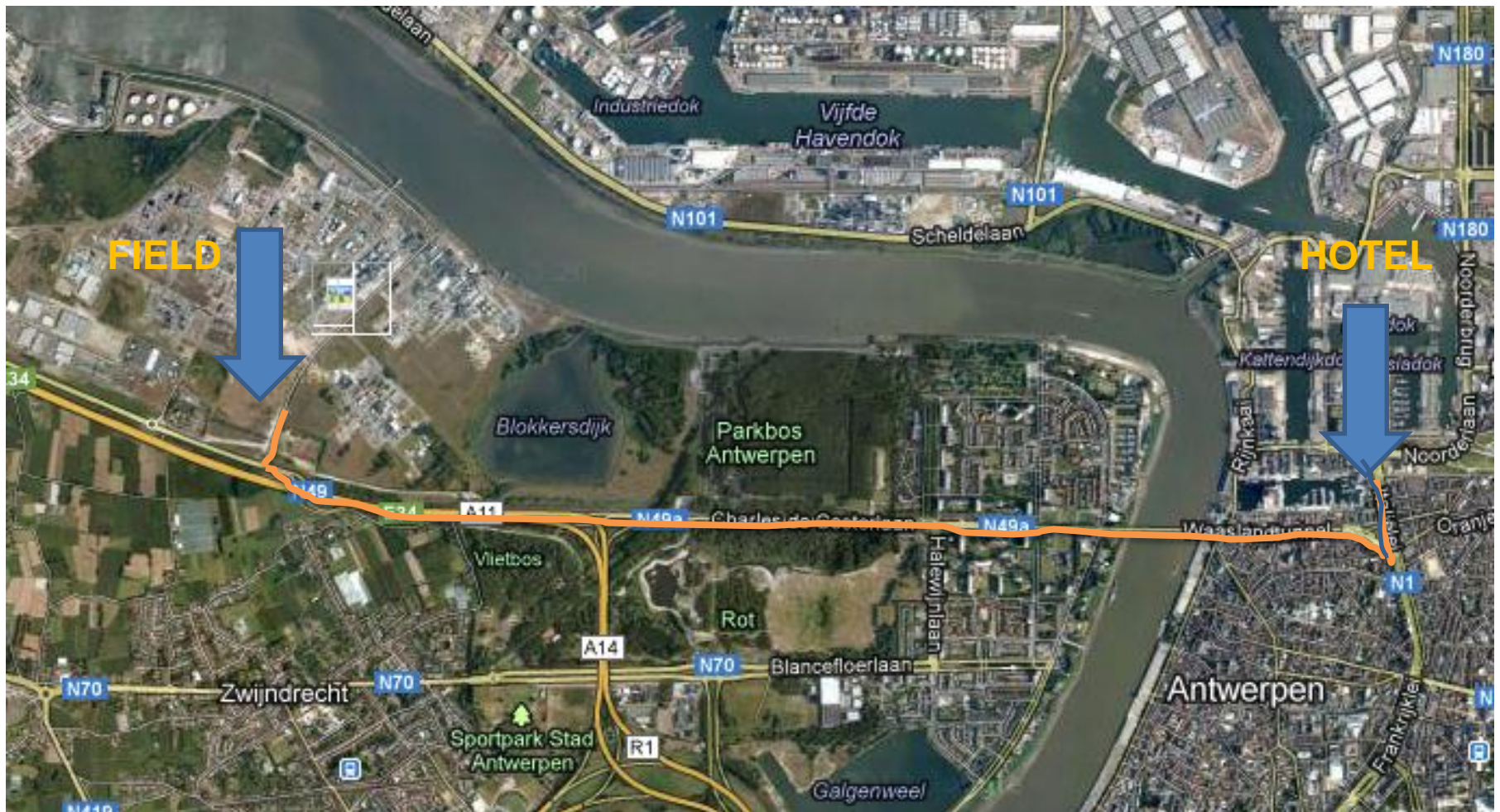
e-mail : .....





Field : Canadastraat , 2070 Zwijndrecht – Tel. : organisier Opdebeeck Erik 0497/434.850

Hotel : Italiëlei 2A – 2000 Antwerpen – Belgium Tel: +32 (0)3 221 49 49





# Holiday Inn Express Antwerp City-North



## Welcome!

Take advantage of the Holiday Inn Express Antwerp City-North hotel's convenient location by Antwerp Harbour and near the city centre.



## What's waiting for you

- 140 contemporary en suite bedrooms
- Complimentary continental buffet breakfast included in your room price
- Bar and lounge area
- Priority Club Rewards programme available
- On-site meeting facilities up to 50 persons
- Underground car parking
- 24 hour welcome from our friendly reception
- Business/communication point in lobby
- Free high speed internet access available
- Dry cleaning/laundry facilities
- Self service Grab@green fridge

### Holiday Inn Express Antwerp City-North

Italiëlei 2A / 2000 Antwerp - Belgium / Tel. +32 (0)3.221.49.49 / Fax +3 (0)3.221.49.44  
hotel@hiexpress-antwerp.com / www.hiexpress.com/ex-antwerp